



**INSTA-CHAIN™**  
The AUTOMATIC ICECHAIN

**VSI – 014**  
Spring & Air-Ride w/ Sway  
& Fuel Tank

995 S 1950 W Ste. B, Springville, UT 84663 - 800-633-0699 - 801-489-9000 - (fax) 801-489-9797 - www.insta-chain.com - traction@insta-chain.com

**COPY AND FAX THIS FORM TO PLACE YOUR ORDER AT - (801) 489-9797**

**VEHICLE SUSPENSION INFORMATION FORM (VSI)**

**DEALER:** \_\_\_\_\_ **PLEASE DESCRIBE ANYTHING UNUSUAL ABOUT**  
**DLR. CONTACT:** \_\_\_\_\_ **YOUR SUSPENSION: (I.E. ANY OBSTRUCTION**  
**CUSTOMER:** \_\_\_\_\_ **WITHIN 30 INCHES OF THE AXLE.)**  
**CUST. CONTACT:** \_\_\_\_\_  
**ADDRESS:** \_\_\_\_\_  
**CITY/ STATE/ ZIP:** \_\_\_\_\_  
**PHONE:** \_\_\_\_\_ **FAX:** \_\_\_\_\_  
**EMAIL:** \_\_\_\_\_ **6 CHAIN / 12 CHAIN P.O.#** \_\_\_\_\_

PLEASE FILL OUT ALL INFORMATION ON FORM COMPLETELY OR WE MAY BE CALLING YOU TO GET IT DIRECTLY

**VEHICLE INFORMATION - MEASURE EACH TRUCK**

Vehicle # \_\_\_\_\_; If you have multiple vehicles with the same specs as this one, please inform us of the quantity and vehicle numbers for each: \_\_\_\_\_

\*Chassis Make: \_\_\_\_\_ \*Model: \_\_\_\_\_ \*Year: \_\_\_\_\_  
 Axle Make: \_\_\_\_\_ Capacity: \_\_\_\_\_  
 \*Suspension Make: \_\_\_\_\_ (SPRING / AIR-RIDE / WALKING BEAM / OTHER)

Torsion / Sway-bar: (IN FRONT / BEHIND / N/A) AXLE

\*TIRE SIZE: \_\_\_\_\_

Chassis is : Bare / Loaded

\*Axle: (SINGLE / TANDEM) Axle Speed: (Two / Single)

\*(Are your Measurements from FRONT / REAR Tandem Axle?)

Offset Pumpkin: (Yes / No)

\*Air Brake Cylinder: (IN FRONT / BEHIND / N/A) Axle

Automatic slack adjuster w/ brakes: None / Disc / S-Cam

Shocks: (IN FRONT / BEHIND / N/A) Axle - Shock Bracket mounted to BOTTOM of U-Bolt Plate? YES / NO

**MEASUREMENTS MUST BE ACCURATE FOR BRACKETS TO FIT PROPERLY!!**

**INSTA-CHAIN RESERVES THE RIGHT TO DETERMINE AND ASSIGN THE BEST CHAIN UNIT AND BRACKET FOR THE VEHICLE'S APPLICATION**

**\*THIS ORDER FORM WILL WORK WITH MOST SPRING AND AIR-RIDE SUSPENSIONS WITH STANDARD U-BOLTS, IF YOU HAVE ANY OTHER SUSPENSION PLEASE CONTACT US FOR CORRECT FORMS.**



**INSTA-CHAIN™**  
The AUTOMATIC ICECHAIN

**VSI - 014**  
Spring & Air-Ride w/ Sway  
& Fuel Tank

995 S 1950 W Ste. B, Springville, UT 84663 - 800-633-0699 - 801-489-9000 - (fax) 801-489-9797 - www.insta-chain.com - traction@insta-chain.com

**COPY AND FAX THIS FORM TO PLACE YOUR ORDER AT - (801) 489-9797**

**VEHICLE SUSPENSION INFORMATION FORM (VSI)**

PLEASE FILL OUT ALL INFORMATION ON FORM COMPLETELY OR WE MAY BE CALLING YOU TO GET IT DIRECTLY

THE FOLLOWING MEASUREMENTS MUST BE TAKEN FROM YOUR VEHICLE(S). SEE DRAWINGS BELOW.

- A:** Depth of round of the U-bolt Plate: The distance from the nut seat to the lowest point of the plate. If flat, write **FLAT** or **0**.
- BF:** Measure the distance from the front of the U-bolt Plate to the ground, measure as close to the point where the U-bolts come through the plate as you can.
- BB:** Measure the distance from the back of the U-bolt Plate to the ground, measure as close to the point where the U-bolts come through the plate as you can.
- C:** The distance, horizontally, from the center of the U-bolt closest to the tire to the nearest point of the tire, 3 1/2" off of the ground (the bulge of the tire). Hang a plumb line from the center of the nearest U-bolt leg and measure horizontally to the bulge of the tire.
- SB:** If the vehicle has a shock bracket mounted below the U-bolt Plate, measure the thickness of the shock bracket.
- X:** The diameter of the U-bolt.
- Y:** This is the distance measuring from the centerline of the Front U-bolts to the centerline of the Rear U-bolts, around one of the axles.
- Z:** The side distance of the U-bolts from center to center on one of the U-bolt Plates
- D:** Measure the thickness of the U-bolt Nut and Washer together.
- E:** Measure the remaining thread showing

Driver side / Pass Side

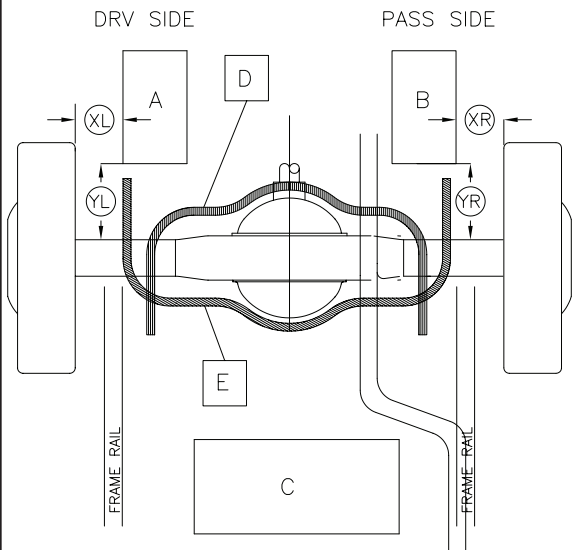
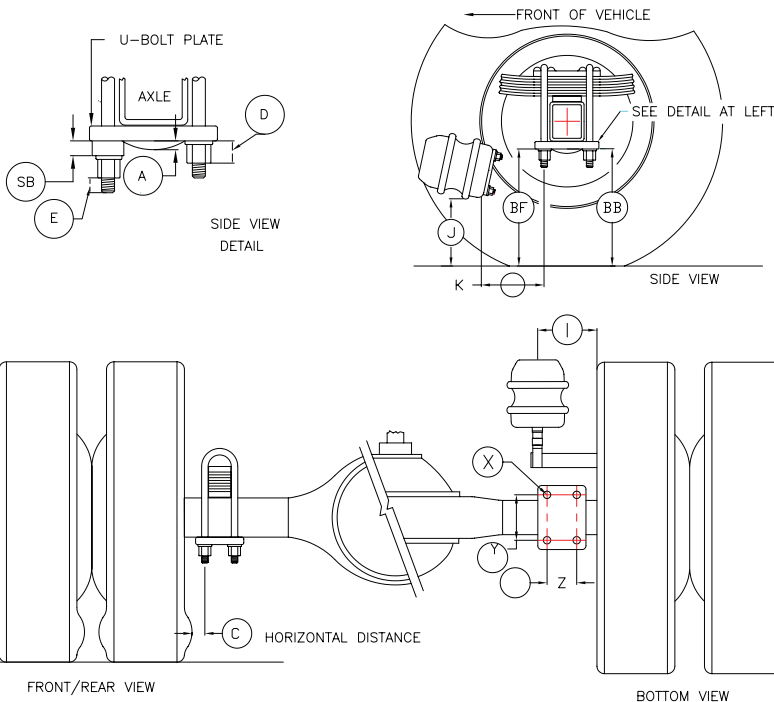
Depth of round: A= \_\_\_\_\_  
(bump on bottom of U-Bolt Plate)  
Height of Front: BF= \_\_\_\_\_  
Height of Back: BB= \_\_\_\_\_  
Sidewall Distance: C= \_\_\_\_\_  
Thickness of U-Bolt Nut: D= \_\_\_\_\_  
Remaining U-Bolt Thread: E= \_\_\_\_\_  
Shock Bracket thickness: SB= \_\_\_\_\_  
\*Bolt Diameter: X= \_\_\_\_\_

\*STANDARD / METRIC - \*FINE / COARSE Thread

Front to Rear (center to center of U-Bolt): Y= \_\_\_\_\_  
Side to Side (center to center of U-Bolt): Z= \_\_\_\_\_  
Sidewall of tire to center of brake can: I= \_\_\_\_\_  
Lowest part of brake can assembly to ground: J= \_\_\_\_\_  
Center of axle to nearest point of brake can: K= \_\_\_\_\_

\*Is the Fuel Tank IN FRONT / BEHIND / N/A the Axle

Center of axle to fuel tank (if behind axle): L= \_\_\_\_\_  
Distance to closest obstruction behind axle: M= \_\_\_\_\_



Where are your Fuel Tank(s) and Muffler are located. Is it A, B, or C? Fuel Tank(s): \_\_\_\_\_

Muffler: \_\_\_\_\_

Please indicate whether if you have a Sway Bar and if the Legs point towards the Front or Rear of the vehicle. Is it D, or E? \_\_\_\_\_

XL= \_\_\_\_\_ XR= \_\_\_\_\_  
YL= \_\_\_\_\_ YR= \_\_\_\_\_